

2019-2020  
**INTERNATIONAL PROGRAMS OFFICE**



**YOUNGSTOWN  
STATE UNIVERSITY**



# Y and proud.



James P. Tressel  
President

*Thank you for expressing your interest in Youngstown State University as you prepare to take the next step in your academic career. We invite you to explore our beautiful campus, learn about our award-winning programs and meet our talented faculty and successful alumni.*

*Above everything else, we are committed to your success. Our objective is to provide you with the learning opportunities inside and outside the classroom that you will need to earn your degree and to set yourself well on your way to a successful and rewarding career.*

*Those opportunities abound around every corner at YSU: state-of-the-art labs and studios; one-on-one relationships with faculty; nationally-accredited academic programs; entertainment, cultural and sports activities; nearly 200 student organizations; a variety of housing options; and hundreds of meaningful internships, co-ops and leadership opportunities. Add that to our attractive scholarship packages and a competitively low tuition rate, and you end up with one of the greatest higher education values in the nation.*

*Find out for yourself what it's like to be a Penguin. We look forward to welcoming you to the YSU family.*

Go Penguins,

A handwritten signature in black ink that reads "James P. Tressel". The signature is written in a cursive, slightly slanted style.

Jim Tressel  
President



- 1 YSU Facts
- 2 Academic Colleges
- 4 Tuition & Scholarships
- 6 Graduate Studies
- 7 YSU/ESL Tuition  
Summer Camp
- 8 American Cultural  
Summer Camp
- 9 Campus Life
- 10 Housing
- 11 Services
- 12 City Life
- 13 Outcomes

# [ FACTS ABOUT YOUNGSTOWN STATE UNIVERSITY ]

## Accreditation

YSU is a public university located in Youngstown, Ohio, accredited by the Higher Learning Commission and is a member of the North Central Association ([www.ncahigherlearningcommission.org](http://www.ncahigherlearningcommission.org)).



**Founded in 1908.**

## Student-Faculty Ratio 14:1

## Student Profile

- Total Enrollment: **12,000**
- Undergraduate: **11,000**
- International Enrollment: **500+**
- Countries of origin: 69
- Nearly **91,000** YSU graduates working, learning and living all over the world



## Recognition

- **Forbes** Top Colleges
- **US News and World Report** ranks the Engineering program in Top 25%
- Undergraduate Business and MBA Programs are **AACSB accredited**
- Most affordable University in Ohio
- Top 7 most affordable university nationwide (College Consensus)



## Academics

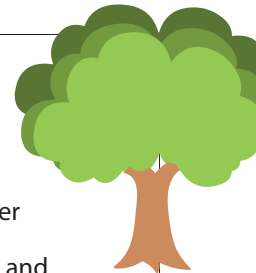
YSU offers **120+** undergraduate majors through its six colleges:

- Business Administration
- Education
- Creative Arts & Communication
- Health & Human Services
- Liberal Arts & Social Sciences
- Science, Technology, Engineering & Mathematics

The College of Graduate Studies offers **54+** master's programs, one specialist program, doctorates in education and materials science and engineering, and the Doctor of Physical Therapy. YSU is also a consortium member of the Northeast Ohio Medical University (NEOMED).

## Campus

- 145 acres
- Located in city center
- One of Ohio's safest and most scenic urban campuses



# YSU ACADEMIC AREAS OF STUDY



## BEEGHLY COLLEGE OF EDUCATION

The BCOE serves as a premier provider of programs that prepare teachers, counselors, educational administrators and practitioners.



“One of the best experiences for me here at YSU has been the staff and faculty in the Beeghly College of Education. We have some of the best professors on campus. They truly practice an open-door policy and go above and beyond to give you the tools to be the best professional educator that you can be. Most importantly, my professors have challenged me, which has allowed me to think critically, work effectively, get involved, and feel confident in my abilities to be an educator and a leader in any environment, and I thank them for that.”

**Ahmed Sutton**

Class of 2016, BSE, Secondary Education – Integrated Language Arts



## BITONTE COLLEGE OF HEALTH & HUMAN SERVICES

The mission of the BCHHS is to transmit knowledge, develop critical thinking, and to serve society through holistic, integrative, and high-quality programs.



“As an Exercise Science, pre-PT student in BCHHS, I have been presented with numerous experiences and an education that has assured integration of my passions and studies – promising that not only will I find preparedness upon graduation for my career, but various aspects of my future. With exceptional guidance of faculty, advisors and our Dean, I am confident that, I have been shown to realize that as Health and Human Services students’ ‘we work to become, not to acquire,’ and as we do so, we will find true gratification.”

**Gabriella Gessler**

Class of 2017, Exercise Science/Pre-PT



## COLLEGE OF CREATIVE ARTS & COMMUNICATION

The CCAC provides a dynamic learning environment in the creative and communication arts to strengthen and broaden the intellectual and cultural horizons of a diverse community.



“Being in the CCAC college has helped excel my creativity. Creativity is something that can’t be taught, but simply planted. One idea can grow and grow if you water it with creativity. Every opportunity is based on what you do with it, and CCAC showed me how to take advantage of each opportunity.”

**Lincoln Williams**

Class of 2016, Telecommunication Studies





## COLLEGE OF LIBERAL ARTS & SOCIAL SCIENCES

*CLASS prepares students for careers in the humanities and social sciences or in many cases for enrollment in graduate and professional programs.*



“ I love being in the College of Liberal Arts and Social Sciences, because the faculty not only work hard to make sure you are on the right track, but they show confidence in your abilities and encourage you to be as successful as possible.”

**Rachel Davis**  
Class of 2017, English



## COLLEGE OF SCIENCE, TECHNOLOGY, ENGINEERING & MATHEMATICS

*The STEM College at YSU is committed to delivering programs of excellence to an engaged learning community. Working with cutting-edge technology and performing research, students translate their academic study into real-world projects and problem solving.*



“ Getting involved on campus is one of the simplest ways to set yourself up for future success. It allows you to network with a broad range of students, engage in relevant academic activities, and helps develop leadership skills. Outside of just working hard in the classroom, I really believe my success thus far can be attributed to making an effort to get involved and participate in different organizations.”

**Hailey A. Sullivan**  
Class of 2017, Chemical Engineering



## WILLIAMSON COLLEGE OF BUSINESS ADMINISTRATION

*The mission of the WCBA is to prepare undergraduate and MBA students for productive and fulfilling careers as leaders in business, government, nonprofit organizations, and society.*



“ The Williamson College of Business is one of the best colleges within YSU. WCBA is filled with amazing professors, programs and staff that offer students a wide variety of resources and networking opportunities. The WCBA has not only successfully prepared me, but helped me get my internship at WFMJ-TV. With small classes and amazing professors, my experience at WCBA has been nothing short of excellent. If used properly, WCBA's resources can get students on the right path to success in their careers.”

**Stefan Della Gatta**  
Class of 2017, Marketing Management

# YSU IS ONE OF THE BEST EDUCATION VALUES – ANYWHERE.

## REACHING INTO YOUR FUTURE

**Keep in mind: YSU is one of the most affordable universities nationwide. Our tuition rates will give you freedom and flexibility to start your career right away or explore more educational opportunities after you earn your degree.**



**For detailed international Admission requirements, please go to:**  
<https://ysu.edu/international-programs-office/future-students>

**CONTACT: International Admissions at [intadm@ysu.edu](mailto:intadm@ysu.edu)**



Photo Credit: Whitney Tressel

## TUITION & COST

(2018 - 2019)

### UNDERGRADUATE

Average Tuition and Fees <sup>1</sup> .....	\$14,974
Room and Board <sup>2</sup> .....	\$10,220
Books and Supplies.....	\$1,400
Health Insurance <sup>3</sup> .....	\$1,423

**Total estimated expenses for one year study..... \$28,017**

Tuition and fees may vary by major, college and area of study. The university reserves the right to assess fees for special services and programs applicable to students. In 2019–2020 and beyond, students should plan for a 5 to 10 percent annual increase for all costs.

1. Includes all International Undergraduate Student fees.
2. Cost of the most popular room and meal plan combination; your cost will depend on the plans you select.
3. Health insurance is required for international students/family.

### GRADUATE

Average Tuition and Fees <sup>1</sup> .....	\$13,900
Room and Board <sup>2</sup> .....	\$10,220
Books and Supplies.....	\$1,400
Health Insurance <sup>3</sup> .....	\$1,423

**Total estimated expenses for one year study..... \$26,943**

Tuition and fees may vary by major, college and area of study. The university reserves the right to assess fees for special services and programs applicable to students. In 2017–2018 and beyond, students should plan for a 5 to 10 percent annual increase for all costs.

1. Includes all International Graduate Student fees for 9 credit hours. If you exceed 9 credit hours, the cost increases.
2. Cost of the most popular room and meal plan combination; your cost will depend on the plans you select.
3. Health insurance is required for international students/family.

**Additional estimated annual expenses for family member(s) accompanying the student to the U.S.**

**Living expenses (nine months) For spouse only ..... \$7,500 For each child ..... \$4,000**

## ADMISSIONS

- We accept all application materials in scanned copies of original documents for admission review purposes; admitted students can bring in their required original materials upon arrival
- No Third-Party Evaluation required

## ENTRY REQUIREMENTS

	GPA	TOEFL/IELTS	REFERENCE & RESUME	TRANSCRIPTS
<b>UNDERGRADUATE</b>	2.0	67 / 6.0 (5.0 min. subscale)	N/A	Required
<b>GRADUATE</b>	2.7	79 / 6.5	Some programs require	

## APPLICATION DEADLINES

TERM	UNDERGRADUATE	GRADUATE
Spring	November 1	October 1
Fall	June 1	April 15

# [ SCHOLARSHIPS ]

## When All Your Hard Work Pays Off

The following scholarships are available for qualified international undergraduate freshmen. Qualified students may be eligible for both scholarships.


### INTERNATIONAL UNDERGRADUATE GPA-BASED SCHOLARSHIP

Based on a 4.0 scale GPA

GPA	VALUE
3.0–3.33 equivalent	\$1,000 <i>International Access Award</i>
3.34–3.69 equivalent	\$4,000 <i>International Achievement Award</i>
3.7 and above equivalent	\$7,000 <i>International Scholar Award</i>

- Available to incoming international freshmen only
- Automatically applied to eligible applicants
- Renewable for three years as long as students maintain a minimum GPA of 3.0
- The deadline of Scholarship Issuance for qualified Students is April 1

### HONORS COLLEGE SCHOLARSHIPS FOR INCOMING FRESHMEN

VALUE	MINIMUM CRITERIA	RENEWAL
<ul style="list-style-type: none"> <li>• \$1,000 honors tuition renewable up to 4 years</li> <li>• \$2,000 honors housing renewable up to 2 years</li> <li>• If renewed for full four years, estimated value for tuition is \$4,000. If renewed for up to two years, estimated value for housing is \$4,000.</li> </ul>	<ul style="list-style-type: none"> <li>• 26 ACT or 1240 SAT</li> <li>• 3.5 GPA</li> </ul> 	<ul style="list-style-type: none"> <li>• 24 credit hours per academic year</li> <li>• Minimum 12 hours per term</li> <li>• 3.0 overall GPA</li> </ul>

Details available at:

<http://www.ysu.edu/academics/honors-college/scholarships>

“ I believe leaving your home country alone is a huge challenge itself, but it is also a great tradeoff to go to YSU. What’s amazing about college life here is that YSU faculty, staff, peer leaders and almost everyone on campus are willing to help you with every step of your journey. You are just a question away from their enthusiastic assistance and guidance. Besides, YSU has very generous scholarships that could lift up your financial burdens and let you explore college without much money-related concern. As a Leslie Cochran Scholarship recipient, I surely have my mind focused on my studies and rich campus resources that YSU has to offer.”

**Dung Nguyen**

Class of 2017, Theater, Musical Theater



“ I am a YSU Penguin from Nepal. Initially, I was intimidated by the thoughts of being lost in transition but the resources here made it very easy to adapt to the life and culture here in the United States. I am specially thankful to my encouraging academic advisors & professors who have helped me to find my way in the overwhelming and unique environment of the university. YSU’s generous scholarships have made my dream of getting world class degree a reality. The vibrant community ensures that there is always something to do on and off campus. Also through my on-campus job and getting involved with student organizations, I have met the most amazing people who have helped me grow as a person. I am already a sophomore, and there is no doubt that YSU will help me not only build my career but also lead a meaningful life. YSU is so amazing!”

**Bikash Thapa**

Class of 2017, Computer Science





## Available Graduate Scholarships and Assistantships

Top Companies offer **OPT Employment** and **H1B Opportunities** for our Graduates.

### Graduate Scholarship (new students only)

- \$500 - \$1,000 per semester of instructional fees
- Cumulative undergraduate GPA of 3.5 or above
- Renewable for up to 6 semesters

### Graduate College Premiere Scholarship 36.0

- 36 semester hours of instructional fees for Fall & Spring
- 12 semester hours of instructional fees for Summer
- Renewable reward
- Sometimes combined with an assistantship
- Cumulative undergraduate GPA of 3.0 or higher

Graduate Assistantships—apply through the graduate application system.

For more information on these and other financial aid opportunities, visit [www.ysu.edu/gradcollege](http://www.ysu.edu/gradcollege).

# COLLEGE OF GRADUATE STUDIES

## ABOUT US

The College of Graduate Studies in partnership with the university's academic colleges offers more than 50 graduate level programs (for specific programs, please check the back cover page) developed to allow qualified applicants the opportunity to meet their educational and career goals.

Graduate faculty members work with students to provide the best opportunities for exemplary education, research and creative experiences allowing qualified students to take their education to the next level whether that be a graduate certificate, master's or doctoral program.

Our dedicated faculty members have been recognized both nationally and internationally. As an urban research university, we value teaching and have many research opportunities for our students. Students have a solid support system here at YSU, as our faculty members strive to be accessible both in and out of the classroom. We hope you will decide to pursue your graduate education here at YSU. You'll find high quality graduate education at Youngstown State University.





# YSU | ESL

## ENGLISH LANGUAGE INSTITUTE

### CONDITIONAL ADMISSION AVAILABLE

The **English Language Institute** at Youngstown State University offers a non-credit-bearing intensive English as a Second Language (ESL) Program for students from around the globe. Classes are available to college-bound students, permanent residents, immigrants and special interest groups.

#### The English Language Institute: Fast Facts

- **No TOEFL required for YSU admission upon completion of the program.**
- **Low student-teacher ratio** (Average 10:1).
- **Six levels of classes**
- **Full- or part-time studies.**
- **Course offerings** – Grammar, Reading, Writing, Listening, Speaking, TOEFL Preparation.
- **Committed, experienced faculty.**
- **Conditional admission** to YSU's undergraduate and graduate programs for ESL students who meet the university's academic requirements.
- **Affordable net tuition** of \$2,730 per term.

For more information, please go to:  
[www.ysu.edu/english-language-institute](http://www.ysu.edu/english-language-institute)

### ESL APPLICATION DEADLINES AND CLASS SCHEDULE

TERM	MODULE	DEADLINE	CLASSES BEGIN	CLASSES END
SPRING 2020	MODULE 1	11/15/19	1/13/20	3/6/20
	MODULE 2	1/20/19	3/16/20	5/8/20
Summer 2020 (one 8-week Module)	MODULE 1	3/20/20	5/18/20	7/10/20
FALL 2020	MODULE 1	6/15/20	8/17/20	10/9/20
	MODULE 2	8/20/20	10/19/20	12/11/20

### ESL 2019–2020 TUITION & FEES

ESL TUITION & COSTS	8-WEEK TERM	16-WEEK SEMESTER	ACADEMIC YEAR	CALENDAR YEAR
TUITION (Full-time)	\$2,785	\$5,570	\$11,140	\$13,925
Student Fees (Health Center Fee, Student Activities Fee, Recreation Center Fee)	\$129	\$129	\$258	\$387
HEALTH INSURANCE	\$590	\$590	\$1,423	\$1,423
BOOKS (Estimated per semester)	\$250	\$250	\$250	\$250
ROOM + BOARD	\$2,550	\$5,100	\$10,200	\$12,750
TOTAL	\$6,304	\$11,639	\$23,271	\$28,735





# [ AMERICAN CULTURAL SUMMER CAMP ]



## ■ ACADEMIC CLASSES FOCUSING ON DIFFERENT THEMES SUCH AS:

- English Language
- American Culture
- 3-D Printing Lab
- Electrical and Computer Engineering

## ■ THREE-WEEK PROGRAM IN JULY

## ■ CULTURAL TOURS TO:

- Niagara Falls
- Pittsburgh
- Cleveland
- Amish Country
- and many others

*For details, please check the* **YSU SUMMER CAMP PAGE**

<https://ysu.edu/international-programs-office/apply-now/quick-menu/summer-in-america>





# [ CAMPUS LIFE ]

**Whether it's painting a mural on a city building with YSUScape, planning the next concert with Penguin Productions or raising money for clean drinking water in Uganda with Student Government, you'll find yourself immersed in a creative, aware and engaged student life on campus.**

## **Student Organizations**

We have more than 200 on campus. Still can't find the one that speaks to you? Build and lead it yourself; we'll make it easy.

## **Student Activities**

It hits at Welcome Week every fall and continues to the end-of-the-year celebration in spring – the invasion of tons of student activities on campus. Concerts, Fall Fest, Homecoming, Volunteer Week, Federal Frenzy, Humans vs. Zombies...yeah, it's all covered.

## **Greek Life**

Extend your Penguin family and go Greek. Our sororities and fraternities include some of the most involved leaders on campus who will support you, challenge you and become your brothers and sisters for life.

## **Rec Center**

With over 33,000 square feet of workout space, the Andrews Recreation and Wellness Center is open to you free of charge all year.

- Strength and conditioning area with 70+ pieces of cardio equipment, 24 selectorized weight-training pieces, 40 plate-loaded and free-weight stations.
- Basketball and volleyball courts.
- High ropes course.
- One of the tallest rock climbing walls in Ohio.
- Meditation center with classes for yoga, spinning, zumba and more.

## **Intramural Sports & Athletic Events**

Grab a group of friends or sign up solo for an intramural sport to compete against other student teams in Dodgeball, Ultimate Frisbee, Shortfield Soccer and more, and Coach Pelini better see you on Game Day cheering on your Penguins in 19 collegiate sports throughout the year. #GoGuins



*"Everyone at YSU has made it an easy transition from high school to college. There have been many opportunities to get involved. For me, I got into ASCE, the racquetball club and Chi Alpha. Everyone makes you feel so welcome – like you're part of a family. I'm so happy that I chose YSU as my college. I couldn't see myself anywhere else."*

**Leah McConnell**  
Class of 2018,  
Civil Engineering &  
Mathematics



# [ HOUSING ]

***Relax and stay awhile!***

This may be your first time living away from home, and we know that's a big deal. We have five on-campus residence halls that provide varying levels of living space and accommodations. Our students often refer to living on campus as being part of a big family, and just like a family, we take care of each other. If on-campus living isn't your thing, there are plenty of off-campus living spaces available as well—including downtown.

That's not all, either. With more than 2,100 residents on campus, there is a culture of community among our students—a community that is the heartbeat of our campus. There's plenty to do in-between classes: a workout at the rec center, an intramural game in Stambaugh Stadium or catching any one of our 19 sports teams competing at the Division I level. During the weekends, downtown Youngstown is packed with students enjoying food, bands and a handful of activities.





# [ SERVICES ]

*Your first year in college will be amazing.  
And we'll make sure you have what you need to also make it a success.*

- **Internship Coordinators** will help you explore your strengths, find your path in college and a career after it.
- Take advantage of our **tutoring centers** to get personalized assistance with writing, math and communication assignments as well as reading and study skills support when you need it.
- **Student Counseling Services** provides high quality, short term, confidential mental health counseling, consultation, educational training and referral services to support the health and success of all current students.
- The **International Peer Mentoring Program** provided by the Center for International Studies and Programs connects YSU international students with student leaders that understand the challenges of college life. Peer Mentors are assigned to international students and assist adjusting to American life both socially and academically. The International Peer Mentor Program focuses on getting to know new students, learning about YSU, adjusting to U.S. life and academics, and meeting people and having fun.
- The **iPals Community** is an interactive student group designed to help bring the YSU students together – both international and domestic – to create a globalized learning community by engaging in exciting events and trips on and off YSU's campus. iPals works to foster global friendships that thrive in the exchange of languages and cultures in an easy, non-threatening environment. When you schedule a **YSU Airport Pickup Shuttle**, you are welcomed by an iPal and will have the chance to make new friends immediately!

*Most importantly, being on campus means being a part of our family. From students to professors, there's always someone looking out for you during your first year and throughout your entire journey at Youngstown State.*

*Determined | and proud.*







Photo Credit Whitney Tressel



# [ THERE'S ALWAYS SOMETHING NEW TO DO. ]

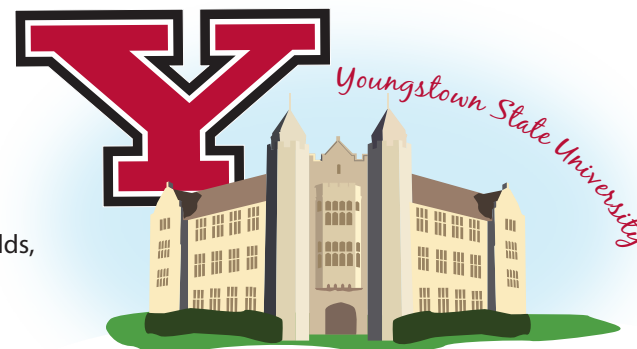
***Youngstown State connects to the downtown district of the City of Youngstown, which means it's just a short walk to the eateries, nightlife, live entertainment and activities happening downtown all year long.***

During the day, there's a buzz of professionals working in the city and other YSU students hanging out between classes filling the sidewalks of Federal Street. Grab a bite from a mix of restaurants and cafes that offer everything from gourmet hot dogs at Suzie's Dogs and Drafts, to Reubens and hot chips at O'Donalds, to pasta and meatballs at Cassese's MVR.

Nights and weekends, YSU students make up the bands, artists and crowds that bring the city to life. Check out local bands or a headlining artist at the Covelli Centre, Youngstown's premier sports and entertainment facility.

Need a quiet place to unwind? The 4,400-acre park smack in the middle of the city is your go-to. Mill Creek MetroParks is Youngstown's favorite gem, with 35 miles of foot and bike trails, beautiful lakes and flower gardens, and a 36-hole championship golf course. Enjoy the scenes at Mill Creek that you won't find in any other city.

Your ticket to all there is to see and do in the city is just a few steps from campus. It's the ultimate university town experience to share with new friends and enjoy as a student at Youngstown State.



*Involved* | *and proud.*





# [ THERE'S SOMETHING FOR YOU TO DISCOVER. ]

Something for you to trail-blaze. Something for you to master.

**Find it at Youngstown State University.**



**Jenna DeLaurentis**  
Class of 2018,  
Political Science/Foreign Affairs

## *Driven | and proud.*

*"I started my YSU life at the English Language Institute, and now I'm an undergraduate student majoring in Journalism. Many different nationalities are represented here in YSU, and there are plenty of activities that I enjoy outside of class. Thanks to these opportunities I've had great experiences and learned valuable lessons every day."*



**Salim Bux**  
Product Engineer, Indiana Marujun, LLC  
MS in Engineering, 2013

## *Passionate | and proud.*

*"After spending six months studying in Brazil and Italy, I am not only returning trilingual, but with a global perspective that I will undoubtedly put forth toward my studies as I continue to pursue my degree in Foreign Affairs at YSU. Studying abroad through YSU was the best adventure of my life!"*



**Nami Nagaoka**  
Class of 2019  
Journalism Major

## *Ambitious | and proud.*

*"As I have started my career in the automotive industry as a Product Engineer and design lead, I am realizing how the mechanical engineering classes offered at YSU provided me all the necessary tools to excel at my job and stand out among my colleagues. The various multicultural activities and events organized and supported by the International Programs Office helped me to understand different cultures. My experience at YSU also challenged me to become more open-minded."*

# WHAT SHOULD I DO?

Accounting (B)  
 Advertising and Public Relations (B)  
 Allied Health\*\* (B)  
 Anatomy & Physiology (C)  
 Anthropology (B)  
 Applied Gerontology (C)  
 Art Education (B)  
 Art Studio (B)  
   Digital Media Track (B)  
   Graphic + Interactive Design Track (B)  
   Interdisciplinary Studio Arts Track (B)  
   Painting/Printmaking Track (B)  
   Photography Track (B)  
   Three-Dimensional Studies Track (B)  
 Associate of Arts (A)  
 Astronomy/Physics (B)  
 Biochemistry (B)  
 Biological Sciences (B)  
   Biology BaccMed Track (B)  
   Physical Therapy Track (B)  
 Biomedical Research (C)  
 Business Administration (A,B)  
 Business Economics (B)  
 Business Technology (A)  
 Chemistry (B)  
   Biochemistry BaccMed Track (B)  
 Communication Studies (B)  
   Interpersonal/Organizational Track (B)  
   Media Track (B)  
   Persuasion Track (B)  
   Social Media Track (B)  
 Comparative International Studies (C)  
 Computer Information Systems (A,B)  
 Computer Science (B)  
 Criminal Justice (A)  
 Criminal Justice\* (B)  
 Dance Management (B)  
 Dental Hygiene (B)  
 Dietetics  
   Coordinated Program in Dietetics (B)  
   Didactic Program in Dietetics (B)  
 Dietetic Technician (A)  
 Early Childhood Associate PreK (A)  
 Economics (B)  
   Accelerated BA/MA in Economics Option (B)  
 Education  
   Art Education (B)  
   Early Childhood & Early Childhood Intervention Specialist Dual License (B)  
   Early Childhood Education (B)  
   Health Education (B)  
   Integrated Language Arts Education (B)  
   Integrated Mathematics Education (B)  
   Integrated Sciences Education (B)  
   Integrated Social Studies Education (B)

Italian Education (B)  
 Middle Childhood Education (B)  
   Lang. Arts & Math Track (B)  
   Lang. Arts & Science Track (B)  
   Lang. Arts & Social Studies Track (B)  
   Math & Science Track (B)  
   Math & Social Studies Track (B)  
   Science & Social Studies Track (B)  
 Physical Education (B)  
 Spanish Education (B)  
 Special Education (B)  
   Mild/Moderate Track (B)  
   Moderate/Intensive Track (B)  
 Emergency Medical Services (A)  
 Engineering  
   Chemical Engineering (B)  
   Civil & Construction Engineering Technology (A,B)  
   Civil Engineering (B)  
   Construction Management Technology (C)  
   Electrical Engineering (B)  
     Biomedical Track (B)  
     Computer/Digital Track (B)  
   Electrical Engineering Technology (A,B)  
   Electric Utility Technology (A)  
     Power Plant Track (A)  
   Industrial & Systems Engineering (B)  
   Manufacturing Engineering (B)  
   Mechanical Engineering (B)  
   Mechanical Engineering Technology (A,B)  
 English (B)  
 Enterprise Resource Planning (C)  
 Entrepreneurship (C)  
 Environmental Studies (B)  
 Exercise Science (B)  
   Graduate Prep Track (B)  
 Family and Consumer Studies (B)  
 Finance (B)  
   CFP Track (B)  
   Financial Management Track (B)  
 Forensic Science (B)  
   Anthropology Track (B)  
   Biology Track (B)  
   Chemistry Track (B)  
 French Language (C)  
 General Studies\* (B)  
   General Studies Completion Program\*\* (B)  
 Geography (B)  
   GIS/RS Track (B)  
 Geology (B)  
 Geospatial Science and Technology (C)  
 Gerontology (B)  
 Health Information Systems (C)  
 Historic Preservation (C)  
 History (B)  
 Hospitality Management (A,B)

Human Resource Management (B)  
 Information and Supply Chain Management (B)  
 Information Technology (A,B)  
   Database Track (B)  
   E-Commerce Track (B)  
   Multimedia/Web Track (B)  
   Network Track (B)  
   Security Track (B)  
   Technical Support Track (B)  
 Italian (B)  
 Italian Language (C)  
 Journalism (B)  
   Broadcast & Digital Media Track (B)  
 Leadership (C)  
 Long Term Care Administration (B)  
 Marketing Management (B)  
   Sales/Sales Management Track (B)  
 Mathematics (B)  
   Accelerated BS/MS in Math Track (B)  
 Medical Assisting Technology (A)  
 Medical Laboratory Science (B)  
 Medical Laboratory Technology (A)  
 Merchandising: Fashion and Interiors (B)  
 Molecular Biology & Biotechnology (C)  
 Museum Studies (C)  
 Music Composition (B)  
 Music Education (B)  
   Instrumental (B)  
   Instrumental Jazz (B)  
   Keyboard (B)  
   Vocal (B)  
 Music History and Literature (B)  
 Music Performance (B)  
   Emphasis Music Recording (B)  
   Instrumental (B)  
   Jazz (B)  
   Keyboard (B)  
   Nonprofit Leadership Option (B)  
   Organ (B)  
   Piano (B)  
   Voice (B)  
 Music Theory (B)  
 Non-Profit Leadership (C)  
 Nursing (B)  
   RN/BSN Completion\*\* (B)  
 Paramedic (C)  
 Philosophy (B)  
   Pre-Counseling Track (B)  
 Physics (B)  
 Physics/Astronomy (B)  
 Police Training Basic (C)  
 Political Science (B)  
   Public Management Track (B)  
 Pre-Forestry (B)  
 Pre-Law (B)

Pre-Medical Programs  
 Pre-Dentistry (B)  
 Pre-Medicine (B)  
 Pre-Optometry (B)  
 Pre-Osteopathy (B)  
 Pre-Pharmacy (B)  
 Pre-Veterinary (B)  
 Professional and Technical Writing (B)  
 Psychology (B)  
   Physical Therapy Track (B)  
 Public Health\* \* (B)  
   Environmental Health & Safety Track\*\* (B)  
 Religious Studies (B)  
   Pre-Counseling Track (B)  
 Respiratory Care (B)  
   Respiratory Care Completion Track\*\* (B)  
 School Nurse (L)  
 Social Services Technology (A)  
 Social Work (B)  
 Sociology (B)  
 Spanish (B)  
 Spanish Language (C)  
 Telecommunication Studies (B)  
   Media Arts Track (B)  
   Sports Broadcasting Track (B)  
 Theater Studies (B)  
 Musical Theater Track (B)  
 Film/Video Track (B)

## UNDERGRADUATE MAJORS, CERTIFICATES AND TRACKS OFFERED

## Graduate Degree Programs

- Doctor of Philosophy in Materials Science & Engineering
- Doctor of Education
- Doctor of Physical Therapy
- Educational Specialist in School Psychology
- Master of Accountancy
- Master of Athletic Training
- Master of Business Administration
- Master of Computing and Information Systems
- Master of Health and Human Services
- Master of Music
- Master of Respiratory Care
- Master of Social Work

## Master of Fine Arts • Creative Writing

## Master of Arts

- American Studies
- Art Education
- Economics
- English
- Financial Economics
- Gerontology
- History
- Interdisciplinary Communication

## Master of Science

- Biology
- Chemistry
- Criminal Justice
- Environmental Science
- Mathematics

## Master of Science in Education

- Counseling

## Master of Science in Engineering

- Civil/Environmental Engineering
- Chemical Engineering
- Electrical & Computer Engineering
- Industrial & Systems Engineering
- Mechanical Engineering

More details go to [www.yсу.edu/ipo](http://www.yсу.edu/ipo) then click

## "Future Students"

Contact Office of International Admissions at [intadm@ysu.edu](mailto:intadm@ysu.edu)

**KEY**  
 (C) Certificate (A) Associate  
 (B) Bachelor (L) License  
 (\*) Offered Online (\*\*) Online Only



**YOUNGSTOWN STATE UNIVERSITY**

INTERNATIONAL

**330.941.2336**

[www.yсу.edu](http://www.yсу.edu) • [ipo@ysu.edu](mailto:ipo@ysu.edu)

Jones Hall, 1 University Plaza, Youngstown, OH 44555



@youngstownstate youngstownstate

All information accurate at the time of publication.